

# BOCA CHASE SECTION TWO

193

A PORTION OF RIVIERA (P.U.D.)  
 A REPLAT OF PORTIONS OF TRACTS 16, 17, 18, 31 AND 32  
 "FLORIDA FRUIT LANDS CO. SUBDIVISION NO. 2" (I-102) IN SECTION I, TOWNSHIP 47S., RANGE 41E.,  
 AND A REPLAT OF A PORTION OF "RIVIERA SECTION ONE" (PUD) (30-101), PALM BEACH COUNTY, FLORIDA

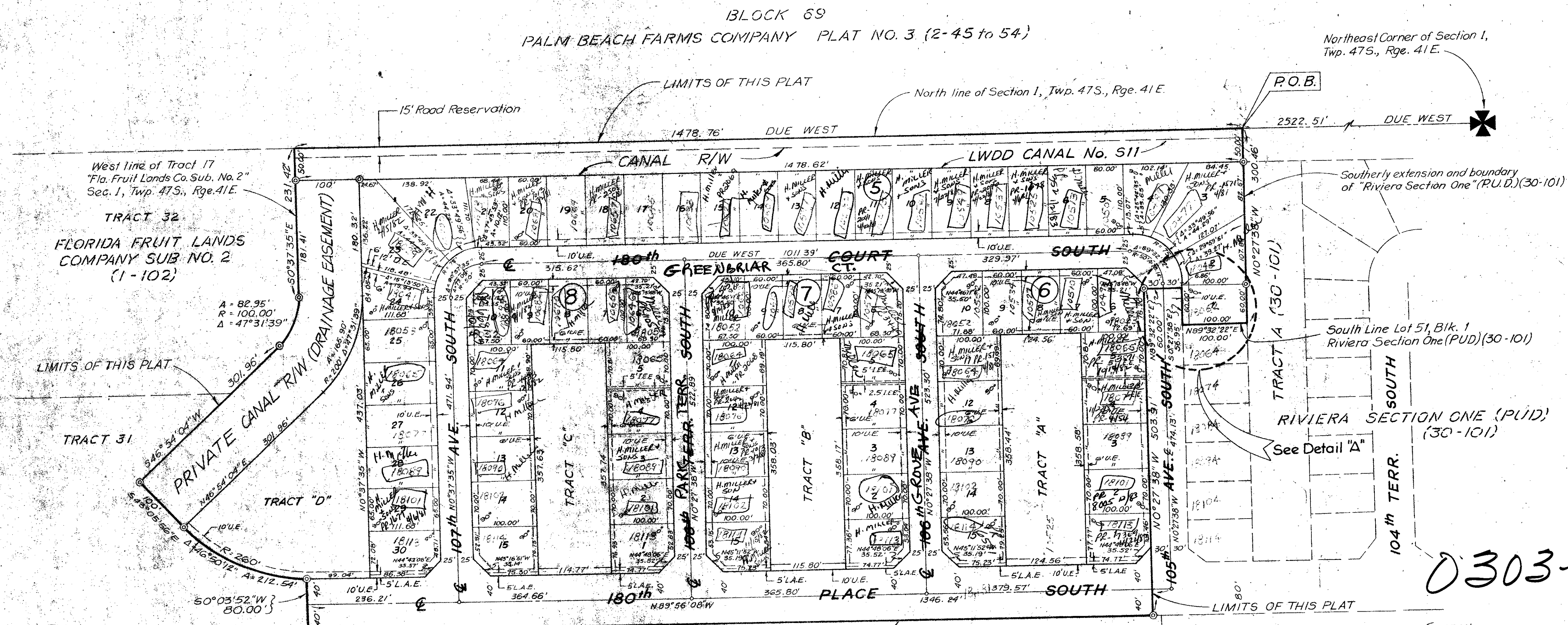
**NOTES**

- 1.) • Indicates Permanent Control Points.
- 2.) © Indicates Permanent Reference Monument.
- 3.) D.E. Indicates Drainage Easement
- 4.) U.E. Indicates Drainage Easement
- 5.) I.E.E. Indicates Ingress and Egress Easements (For Pedestrian use only)
- 6.) Bearings shown hereon are based on the North line of Section I, Twp. 47 South, Range 41 East, having an assumed bearing of Due West as shown on Riviera Section One (P.U.D.) P.B. 30 Pg. 101 P.B.C.R.
- 7.) L.A.E. Indicates Limited Access Easement.

PREPARED BY  
**KEYSTONE ENGINEERING INC.**  
 6301 N.W. 9th AVE SUITE B  
 FT. LAUDERDALE, FLORIDA  
 ORDER NO. 46114 - E

GRAPHIC SCALE IN FEET

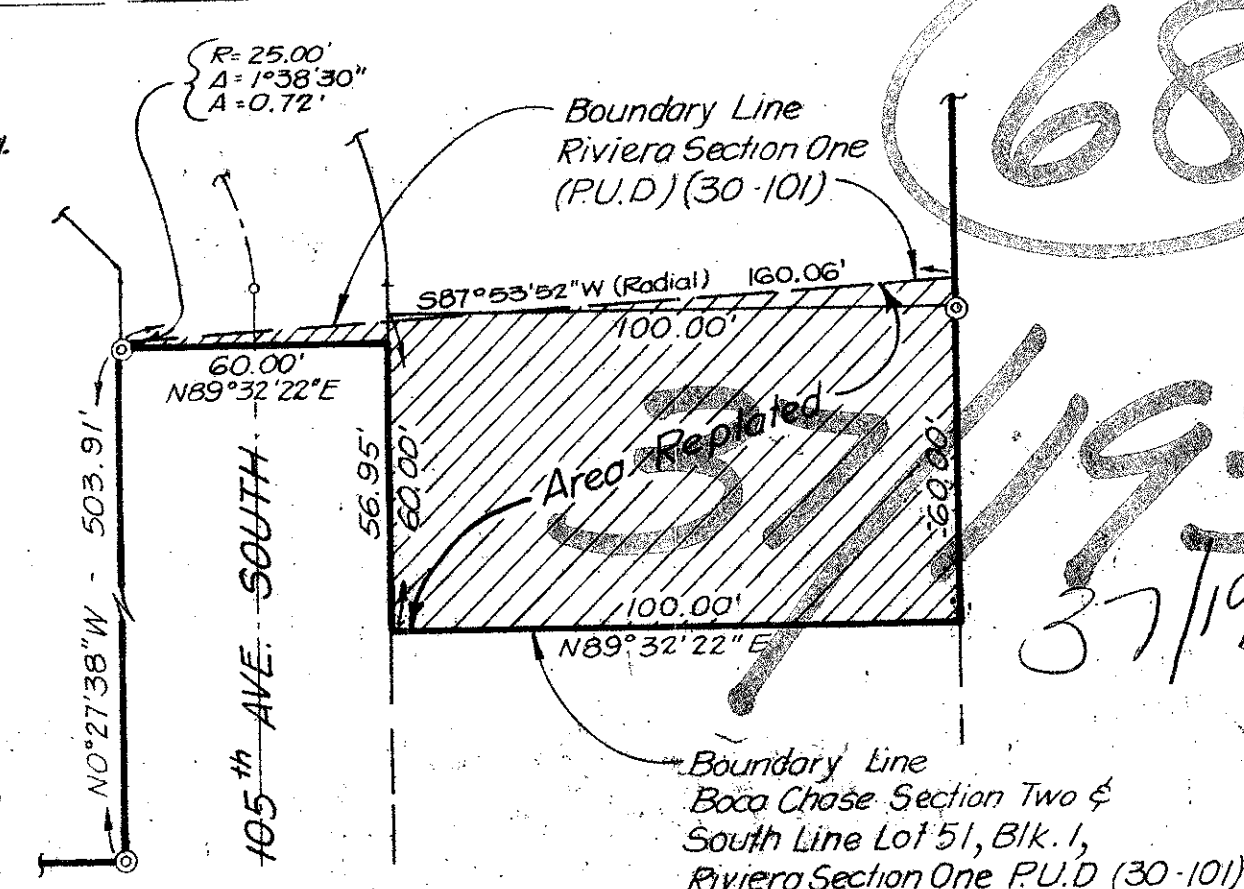
SHEET 2 OF 2 SHEETS



0303-301

Note: FOR CHANGE IN Lot LINES See Attached

1/47/41



Boca Chase Sec. II - Riviera PUD